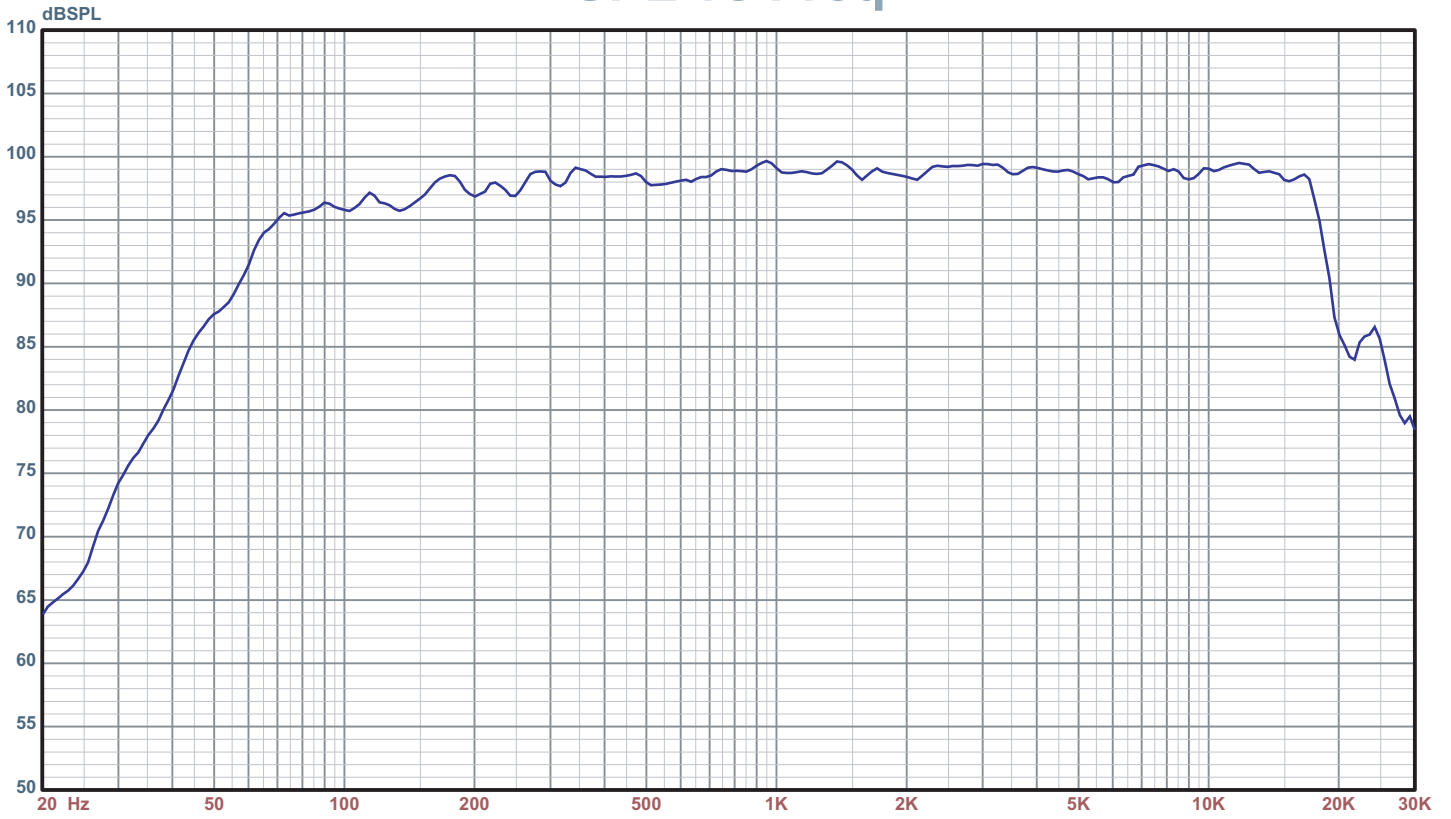


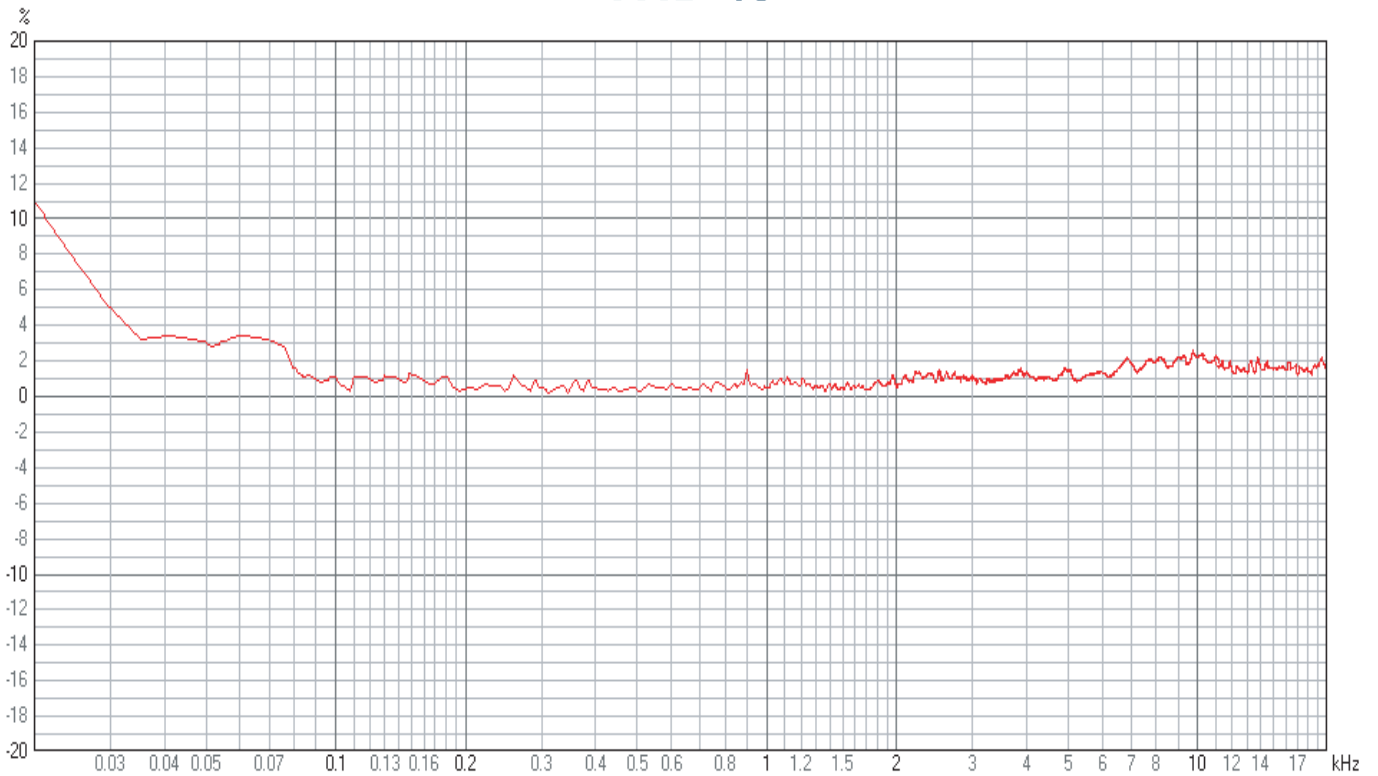
# SPL vs Freq



1: Basys B12 V2 1w/1m free space

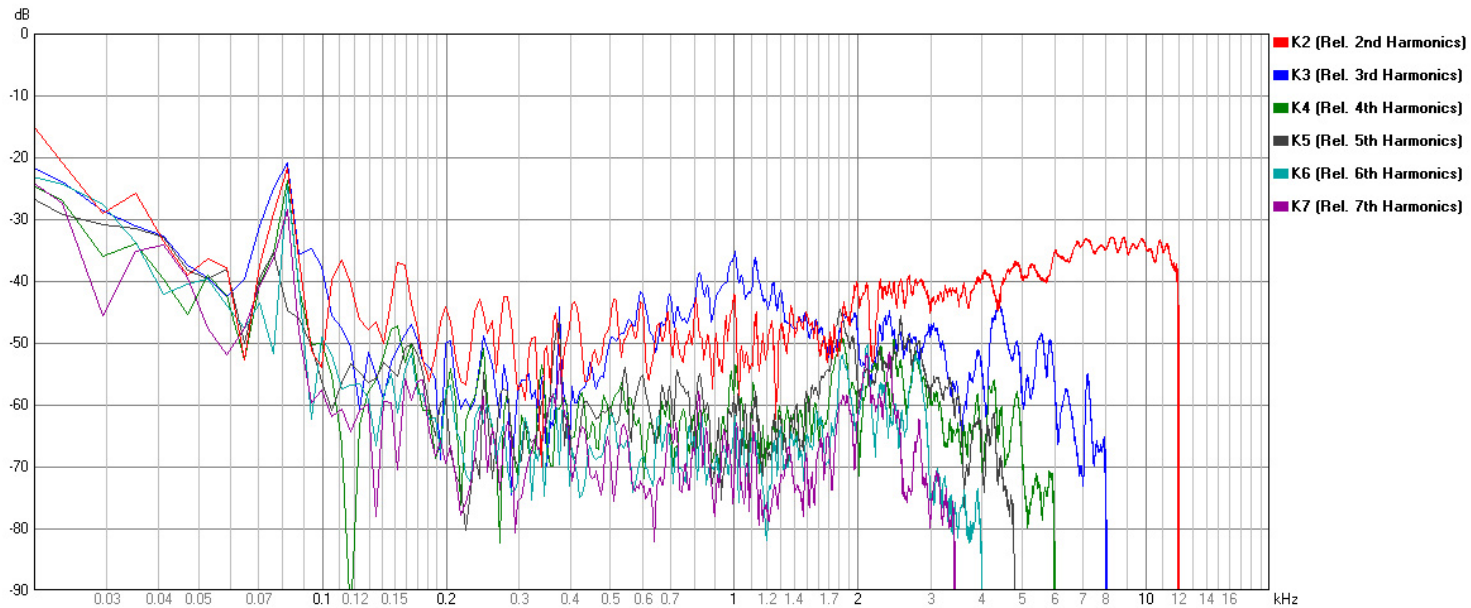


# THD %



1: Basys B12 V2 110dB/1m (20Hz - 20KHz)

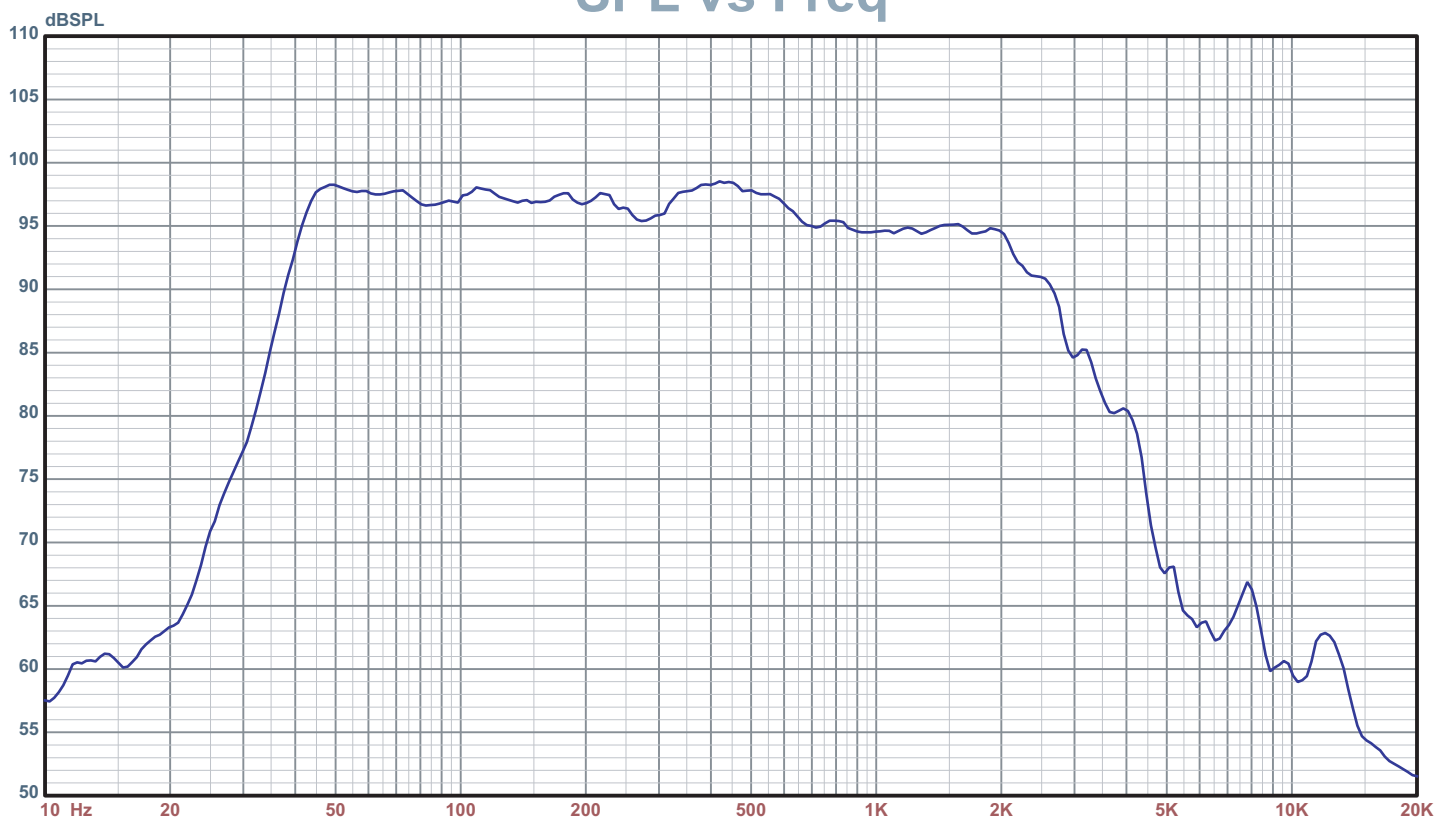




Basys B12 2nd - 7th relative harmonics



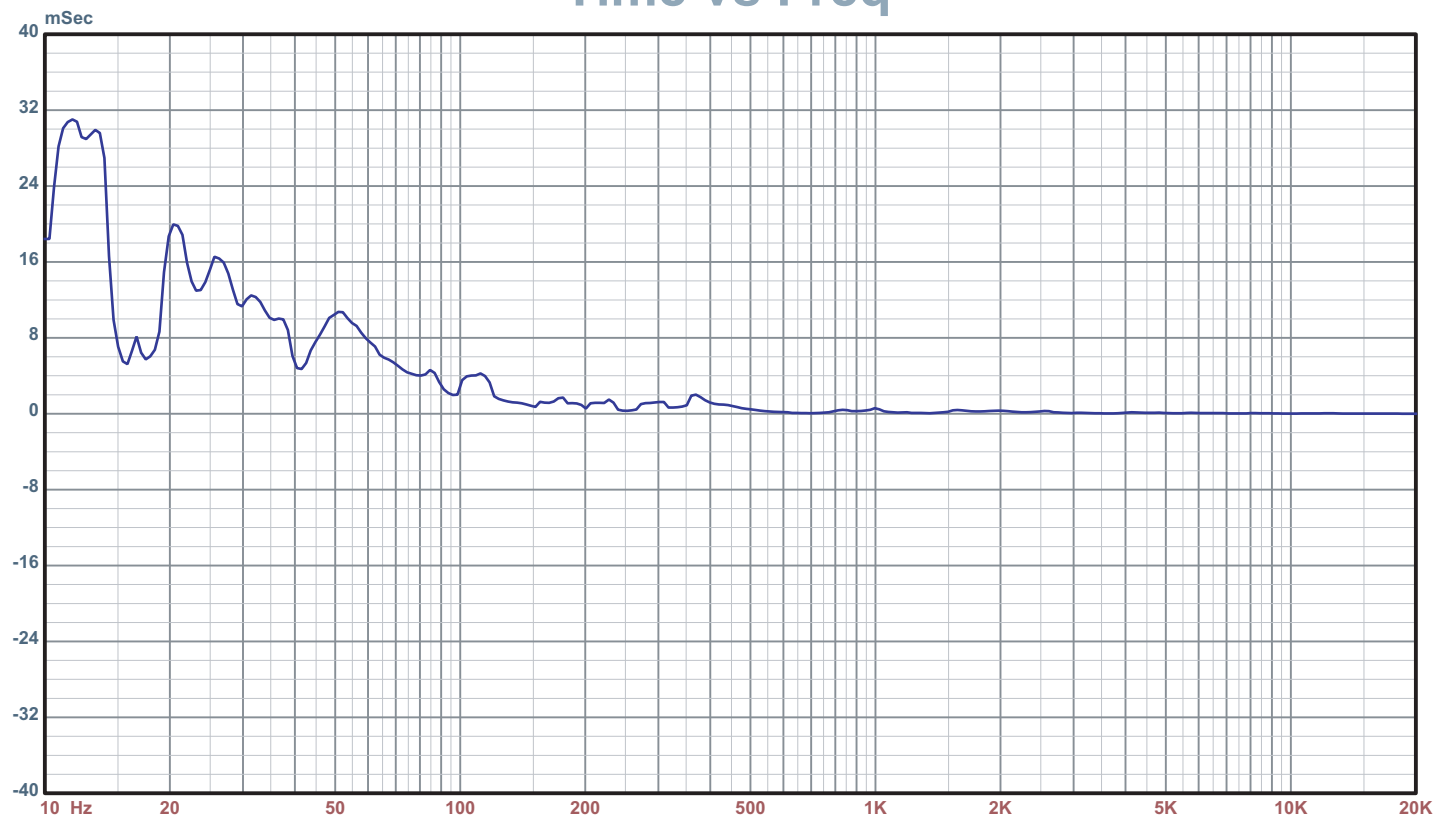
# SPL vs Freq



1: Basys B15 V2 1w/1m half space (groundplane)



# Time vs Freq



1: Basys B15 V2 Group Delay

